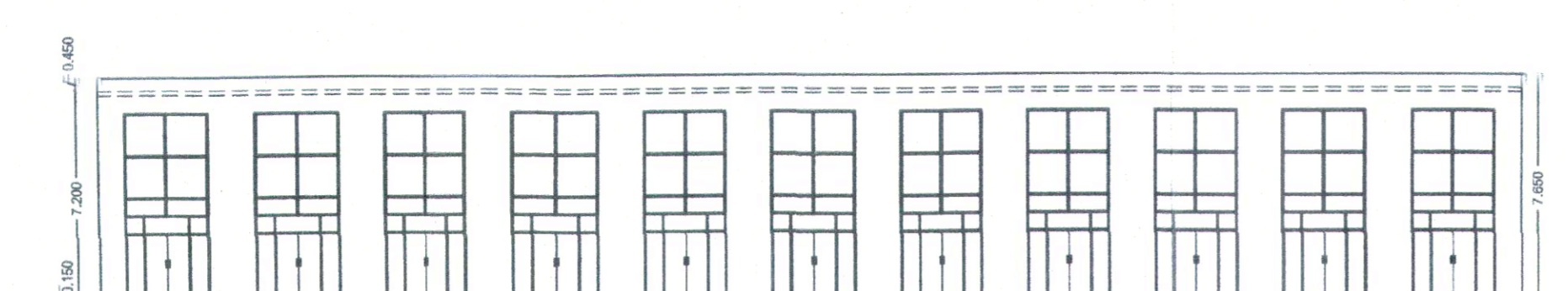
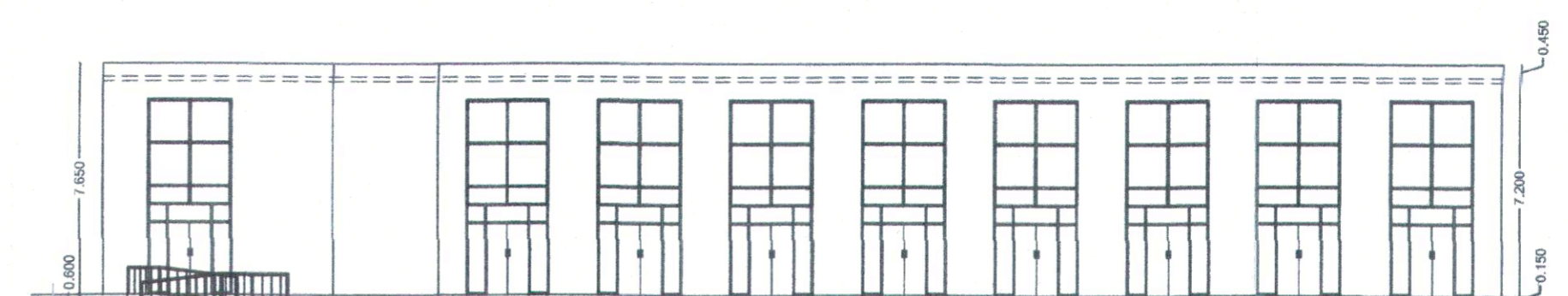




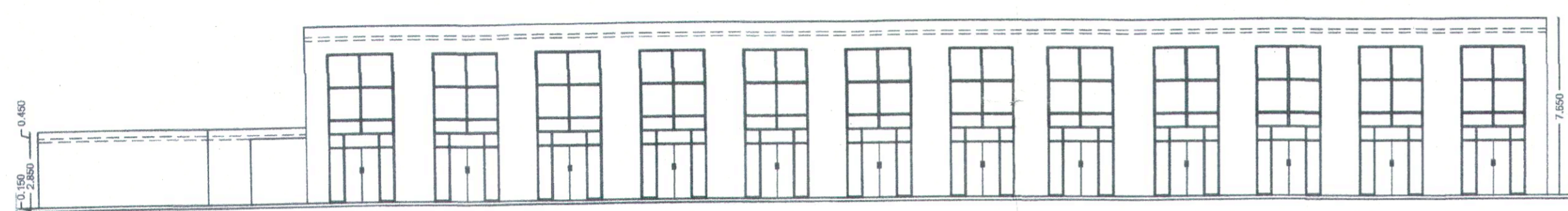
FRONT & REAR ELEVATION
BLOCK-A



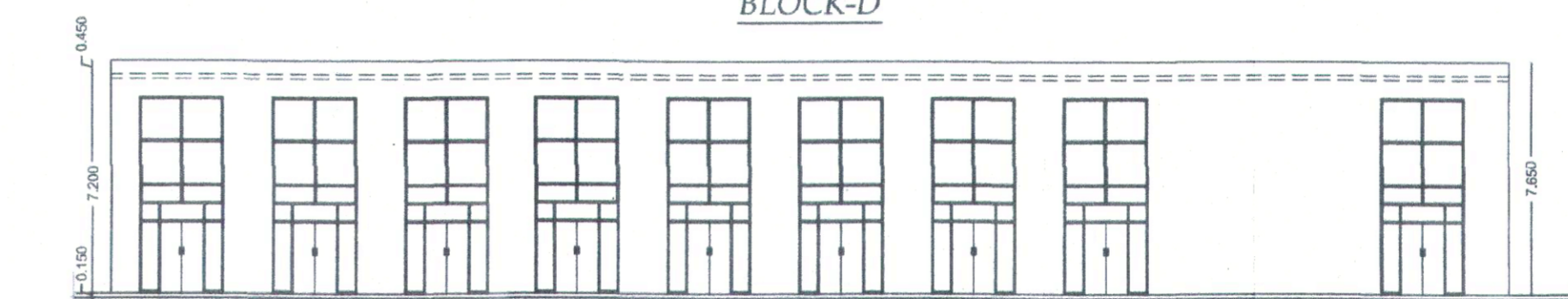
FRONT ELEVATION
BLOCK-B



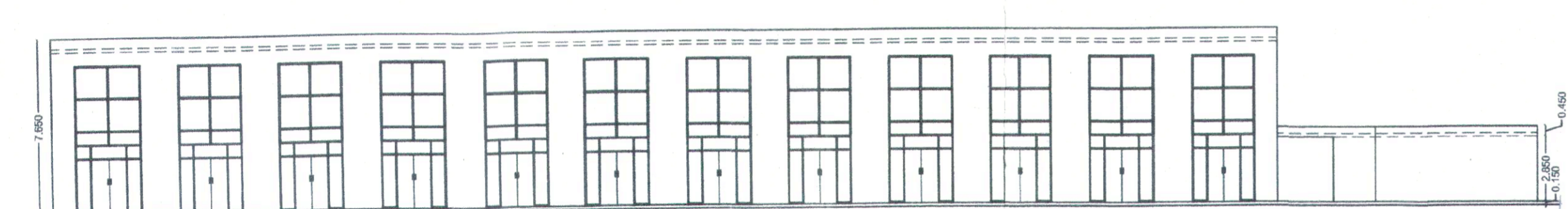
FRONT ELEVATION
BLOCK-D



REAR ELEVATION
BLOCK-C

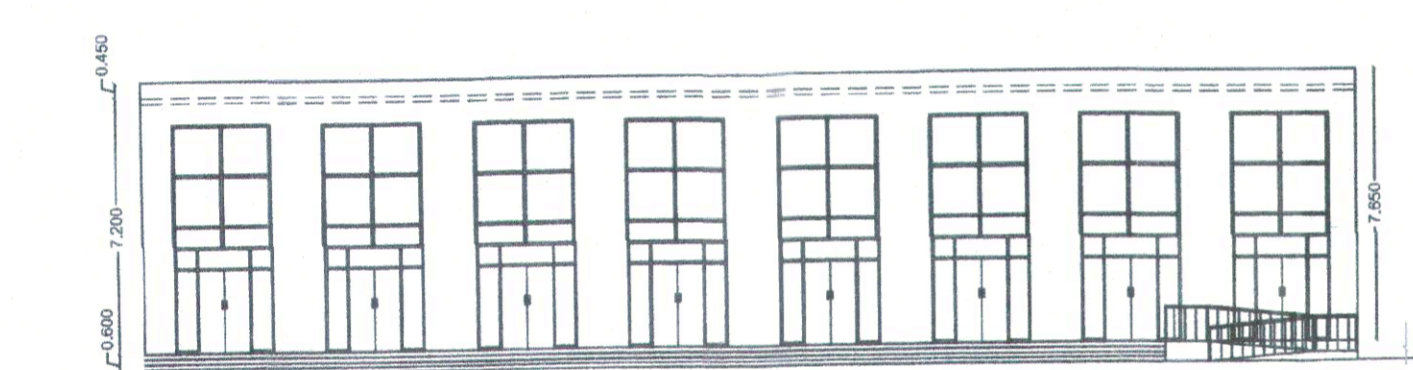


FRONT ELEVATION
BLOCK-D

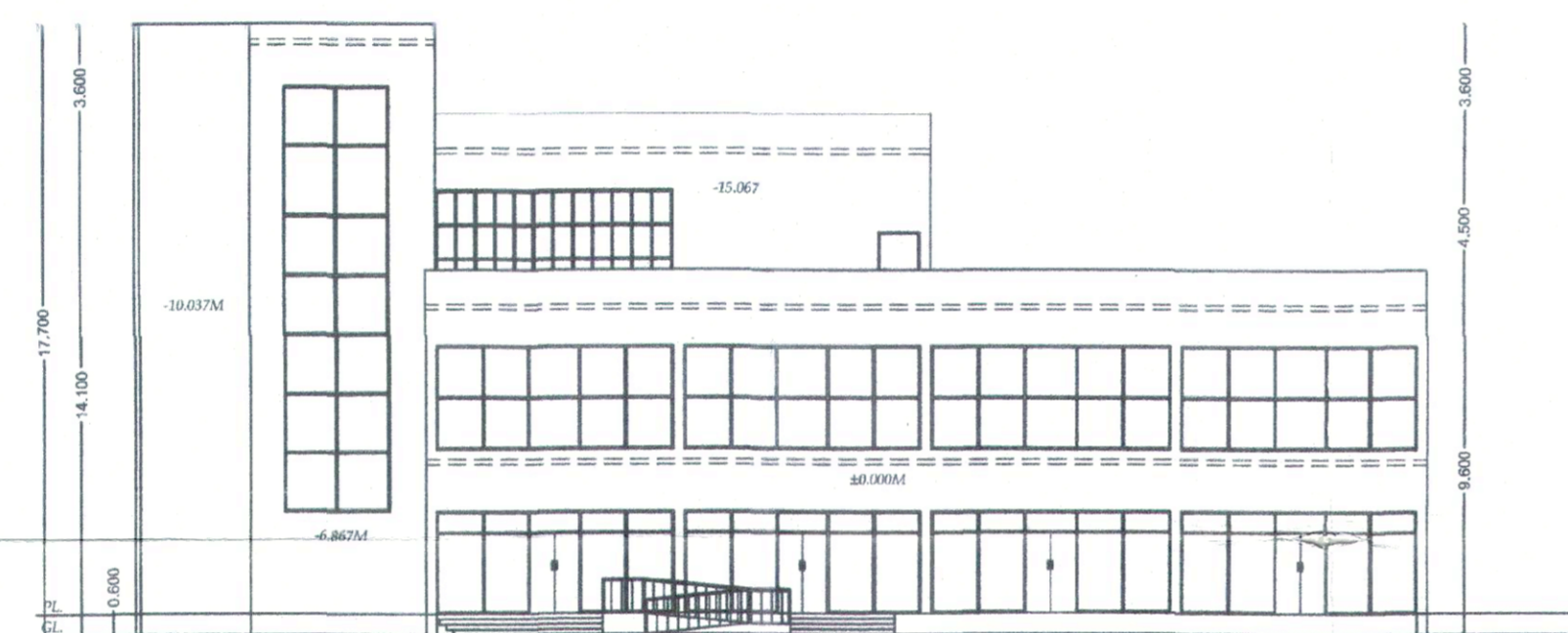


FRONT ELEVATION
BLOCK-C

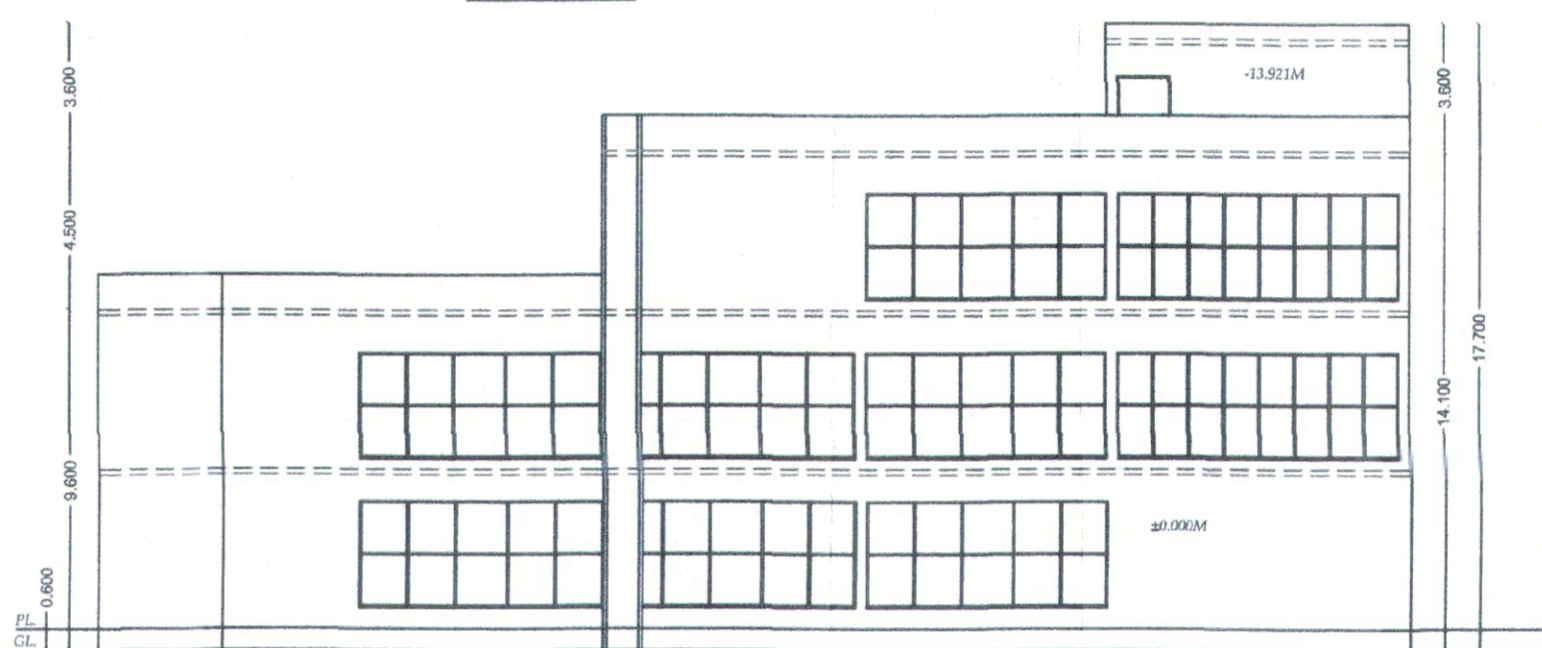
0.10MT. TH. R.C.C. SLAB
2COATS OF HOT BITUL
0.07MT. MUD IN SLOPE
0.03MT. TILE FLOORING



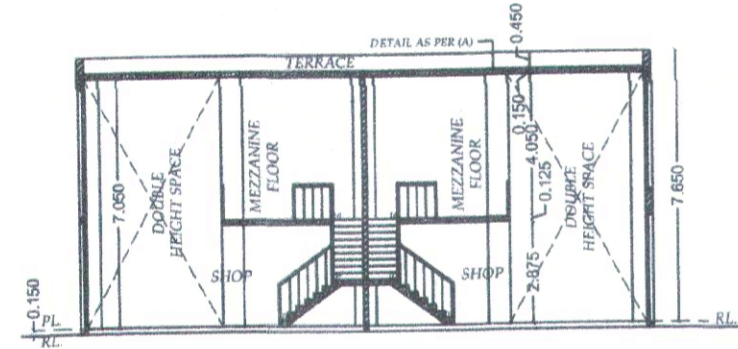
FRONT ELEVATION
BLOCK-E



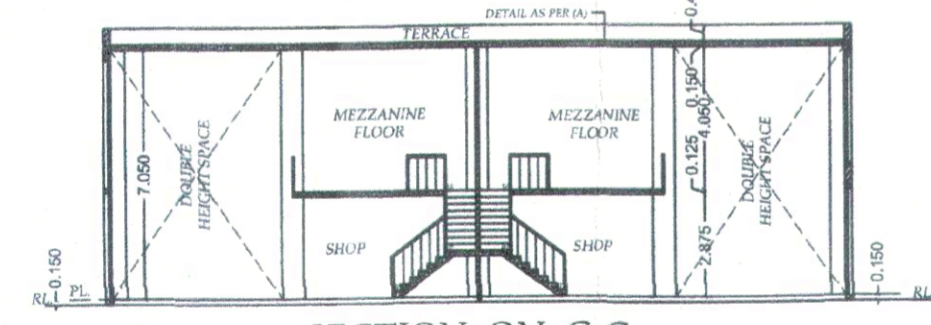
FRONT ELEVATION
(BLOCK - F)



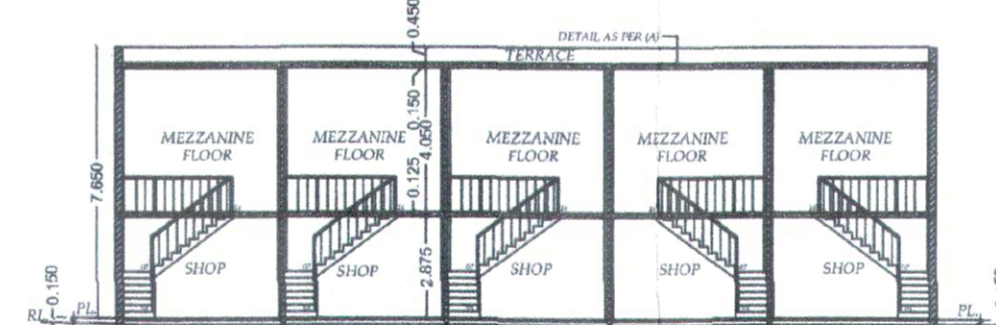
REAR ELEVATION
(BLOCK - F)



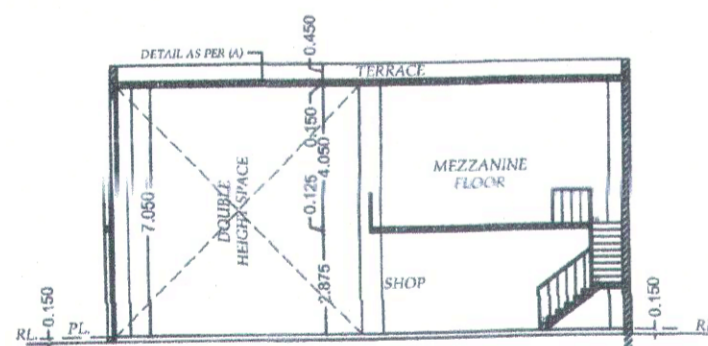
SECTION ON C-C
BLOCK - A



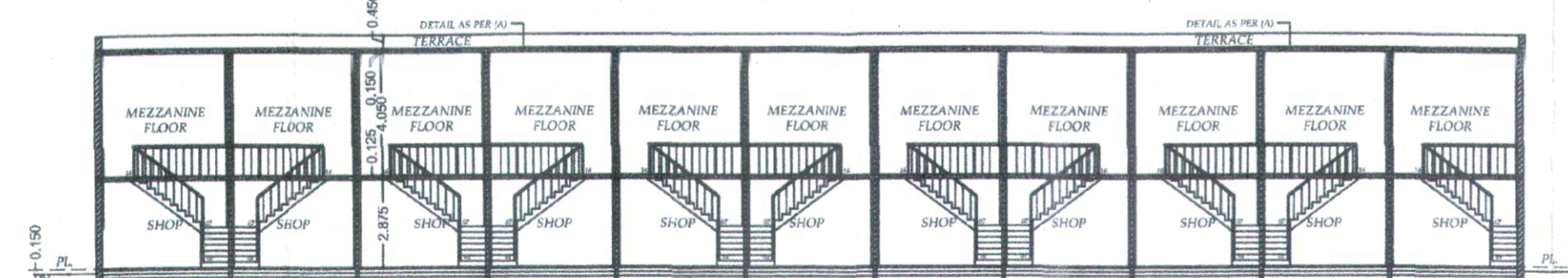
SECTION ON G-G
BLOCK - C



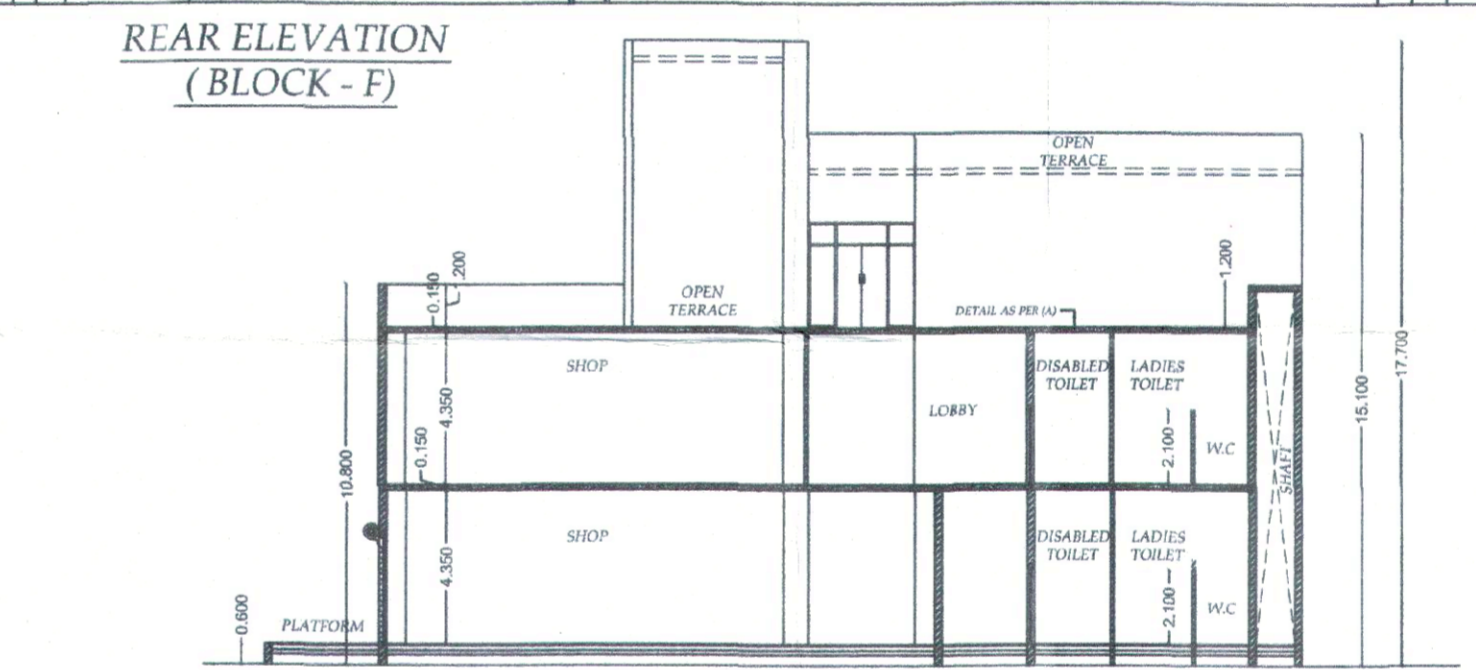
SECTION ON B-B
BLOCK - A



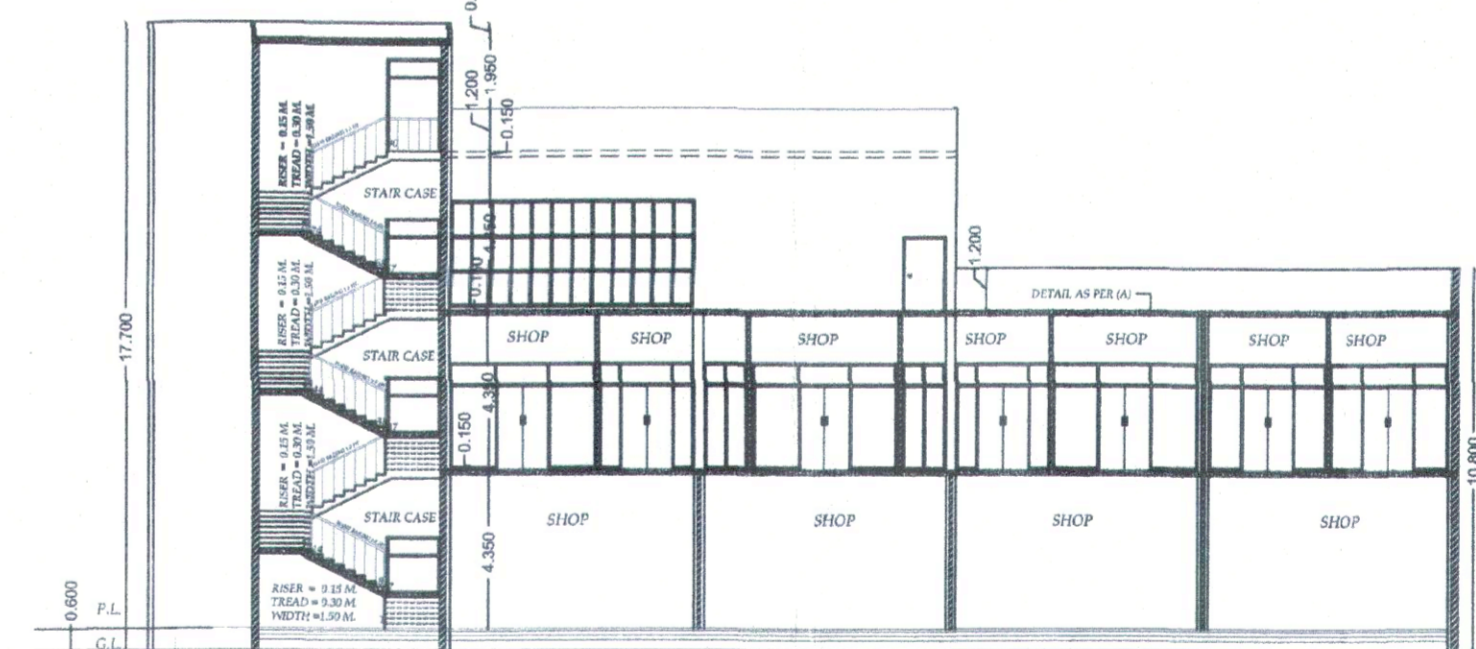
SECTION ON E-E
BLOCK - B



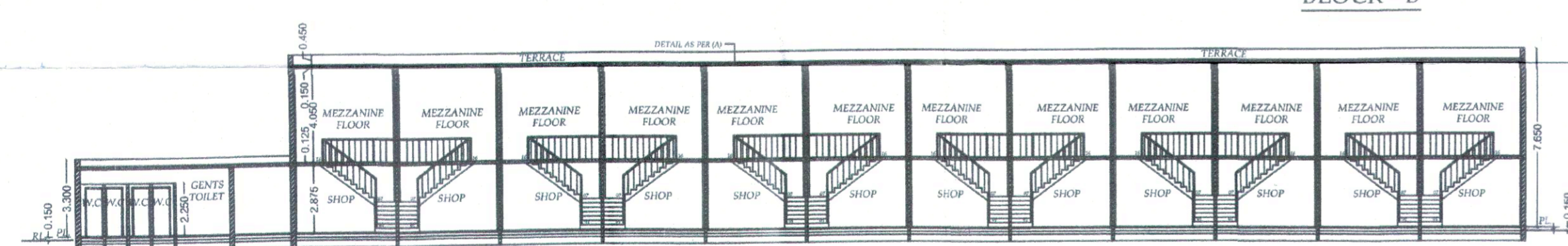
SECTION ON F-F
BLOCK - B



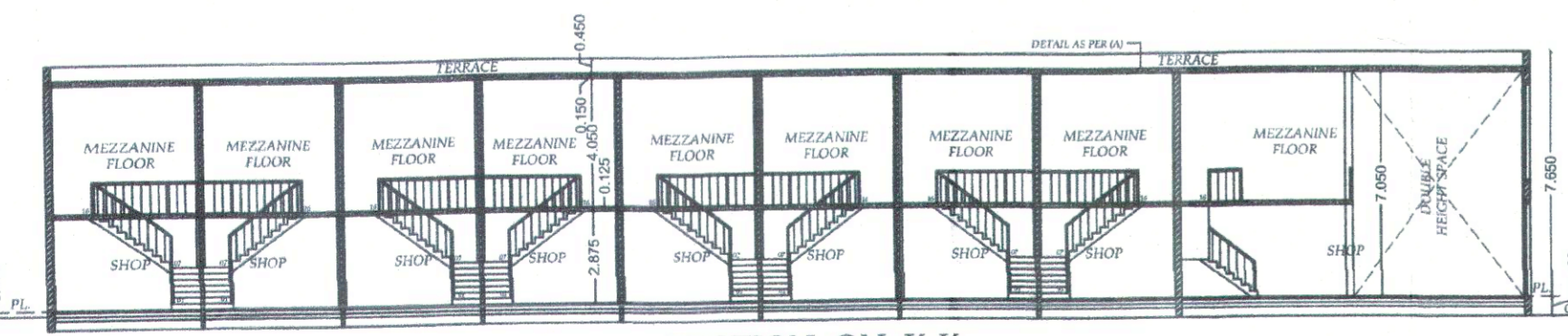
SECTION ON N-N
BLOCK-F



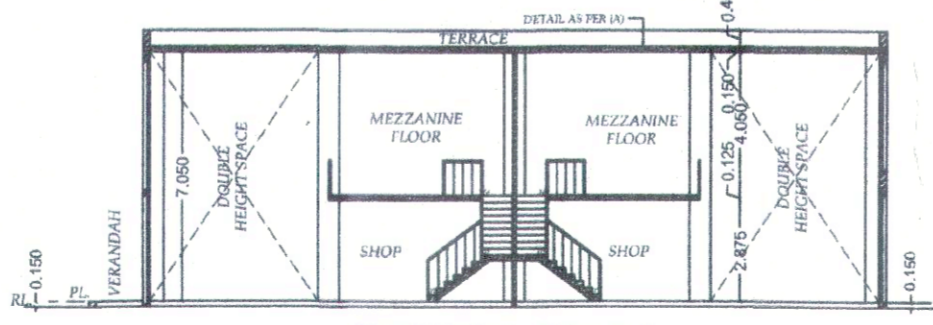
SECTION ON P-P
BLOCK-F



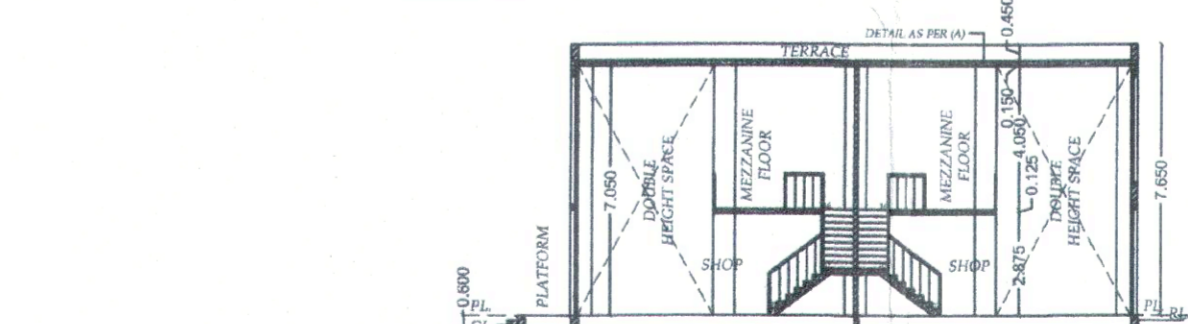
SECTION ON H-H
BLOCK - C



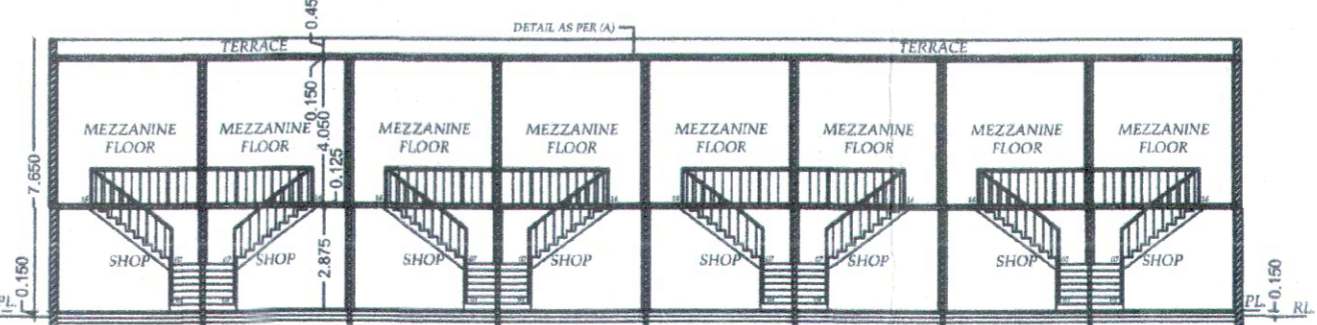
SECTION ON K-K
BLOCK - D



SECTION ON J-J
BLOCK - D



SECTION ON L-L
BLOCK - E



SECTION ON M-M
BLOCK - E

EXISTING & PROPOSED BUILDING PLAN OF
COMMERCIAL COLONY (LICENCE No. 54
OF 2009 DATED 28.08.2009) FOR AERENS
GOLDSOUK PROJECT (HISAR) PVT. LTD.
SITUATED AT SECTOR - 25, HISAR.

SCALE :- 1 CM = 200 CM DRG. No :- 13

This is a "PROVISIONAL BUILDING PLAN" approved only for the purpose of inviting objections from the general public.

0.10MT. TH. R.C.C. SLAB
2COATS OF HOT BITUL
0.07MT. MUD IN SLOPE
0.03MT. TILE FLOORING

0.03MT. FLOOR FINISHING
0.10MT. TH. R.C.C. SLAB
0.10MT. H. CONC.
& BRICK BALLAST

0.03 TH. FLOOR FINISHING
0.07 TH. C.CON. 1:2:4
0.115 TH H. C.CON. 1:8:16
& SAND FILLING

GALVALUME SHEET COVERING
STEEL TRUSS ROOF
SLOPE 1:40

Parveen Kumar J.D.

APPLICANT SIGN.

For Aerens Gold Souk Project (Hisar) Pvt. Ltd.
Authorised Signatory

ENGINEER

T.D. ANIL
M.E. STRUCTURES
CHARTERED ENGINEER (P-1094277)
CTP REGT NO. T350A
9810076111 9810078111
Email: tdanil1985@gmail.com
460 HEVA APARTMENTS, SEC-56, GGN-122011

ARCHITECT

DD (HQ)
Member
BPAC

Signature of Architect